



Assisted Living Rate Sheet – 2021

1	Neighborhood	Accommodation	Daily	Monthly
	Orchard Terrace	Studio	\$165	\$4950
		1 Bedroom	\$174	\$5220
		Companion Suite (shared Bath)	\$155	\$4650
		Deluxe 1 BR/ Couple's Suite	\$195	\$5850
	Fiddler's Green	Studio	\$165	\$4950
		1 Bedroom	\$174	\$5220
		2 Bedroom	\$190	\$5700
Above: 2nd Person in same suite – the cost for the 2nd person is \$1500/month, plus level of care.				
Below: Garden House & Blossom Place are specialized Memory Care Assisted Living				
	Garden House	Studio Only	\$155	\$4650
	Blossom Place	Studio Only with Private Bath	\$165	\$4950

2	Care Levels	Daily	Monthly
	Level 1	\$25	\$750
	Level 2	\$35	\$1050
	Level 3	\$45	\$1350
Care levels are determined, in part, by completion of 1) Health Care Practitioner Physical Assessment by the resident's physician; 2) Nursing Assessment by our Delegating RN; and 3) Maryland State Assisted Living Scoring Tool, all of which consider factors such as mobility, medications, monitoring of clinical needs, safety awareness, fall risk, incontinence, and cognitive and behavioral status.			

How to Calculate Costs 1) Accommodation Rate + 2) Care Level = Total Cost

What's included in the Cost? Room, all meals and snacks, housekeeping, personal laundry, linens, towels, activities program, basic cable, wi-fi, and furniture – bed, dresser, nightstand, chair, lamp (or resident can bring his/her own furniture); & personal care such as assistance with bathing, dressing, toileting, mobility, medication administration, individual care plans, monitoring of clinical status and needs.

One-time, non-refundable Community Fee of \$3000 (\$4000/couple)

***30-day respite stays based on availability – Add \$10/day**

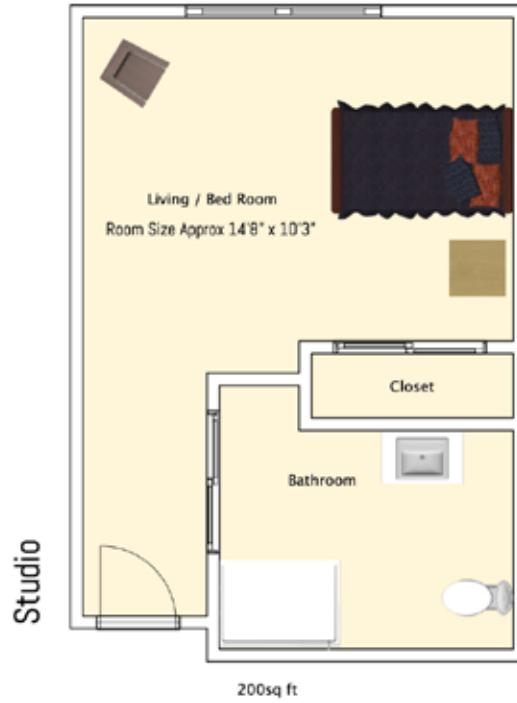
Prices effective as of 1/1/2021 and are subject to change without notice
Costs listed above reflect a 30 day month

5800 Genesis Lane
Frederick, MD 21703

Phone: 301-694-3100
Fax: 301-694-0308



Floor Plans for Assisted Living : Orchard Terrace



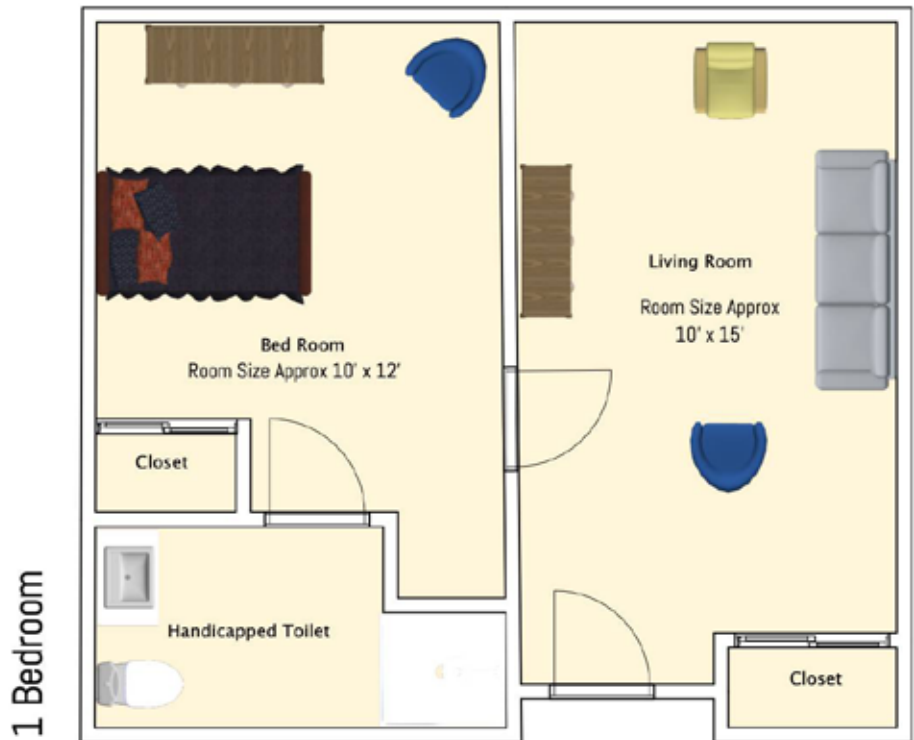
Floor Plans for Assisted Living : Orchard Terrace



Floor Plans for Assisted Living : Fiddler's Green



280 sq ft



360 sq ft



Floor Plans for Assisted Living : Fiddler's Green

