



Independent • Assisted Living • Dementia Care  
Home Care Services

## Assisted Living Rate Sheet – 2021

1) Accommodation	Floor Plan	Daily	Monthly
<b>Orchard Terrace</b>	Studio	\$ 165	\$ 4950
	1-Bedroom	\$ 174	\$ 5220
	Companion Suite (Shared Bath)	\$ 155	\$ 4650
	Deluxe 1-BR/Couple's Suite	\$ 195	\$ 5850
<b>Fiddler's Green</b>	Studio	\$ 165	\$ 4950
	1 Bedroom	\$ 174	\$ 5220
	2 Bedroom	\$ 190	\$ 5700
	Companion Suite (Shared Bath)	\$ 155	\$ 4650
<p><b>Above:</b> 2<sup>nd</sup> Person in same suite – the cost for the 2<sup>nd</sup> person is \$1500/month, plus level of care.</p> <p>-----</p> <p><b>Below:</b> Garden House &amp; Blossom Place are specialized Alzheimer's and/or dementia care Assisted Livings.</p>			
<b>Garden House</b>	Studio only	\$ 155	\$ 4650
<b>Blossom Place</b>	Studio only with private bath	\$ 165	\$ 4950

2) Care Levels		Daily	Month
<b>Care Levels*</b>	Level 1	\$ 25	\$ 750
	Level 2	\$ 35	\$ 1050
	Level 3	\$ 45	\$ 1350
<p>* Care levels are determined, in part, by completion of 1) Health Care Practitioner Physical Assessment by the resident's physician; nursing assessment by our Director of Nursing; and 3) State Assisted Living Scoring Tool, all of which consider factors such as mobility, medications, monitoring of clinical needs, safety awareness, fall risk, incontinence, and cognitive and behavioral status.</p>			

**Calculating Cost?** 1) Accommodation Rate + 2) Care Level = Total Cost

### What's included in the Cost?

Room, all meals and snacks, housekeeping, personal laundry, linens, towels, activities program, basic cable, wi-fi, and furniture – bed, dresser, nightstand, chair, lamp (or resident can bring his/her own furniture); & personal care such as assistance with bathing, dressing, toileting, mobility, medication administration, individual care plans, monitoring of clinical status and needs.

**One-time, non-refundable Community Fee of \$3000 (\$4000/couple)**

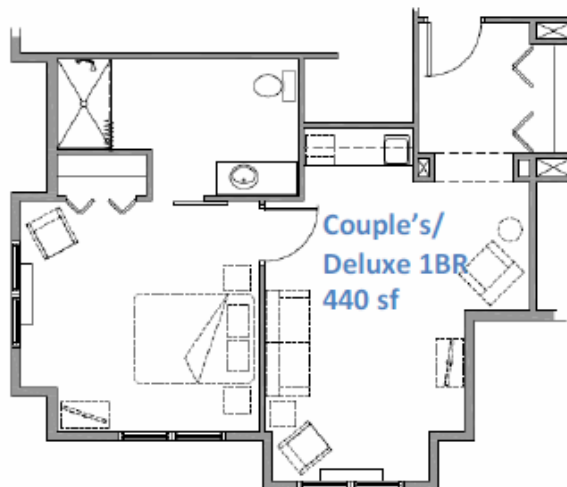
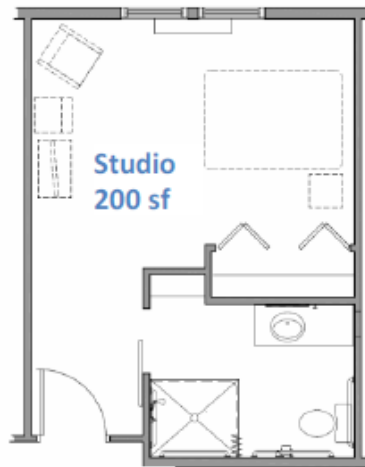
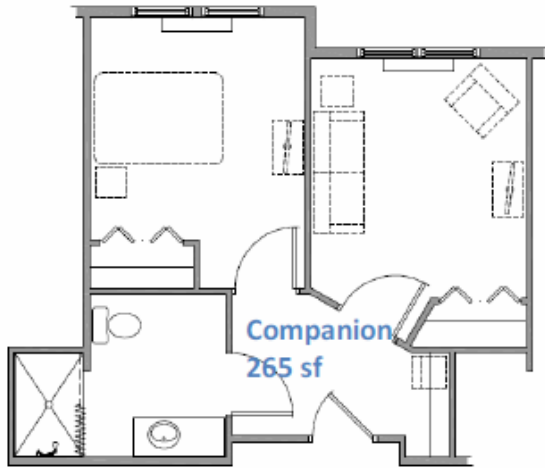
**\*30-day respite stays based on availability – Add \$10/day**

Prices effective as of 1/1/2021 and are subject to change without notice  
Costs listed above reflect a 30 day month



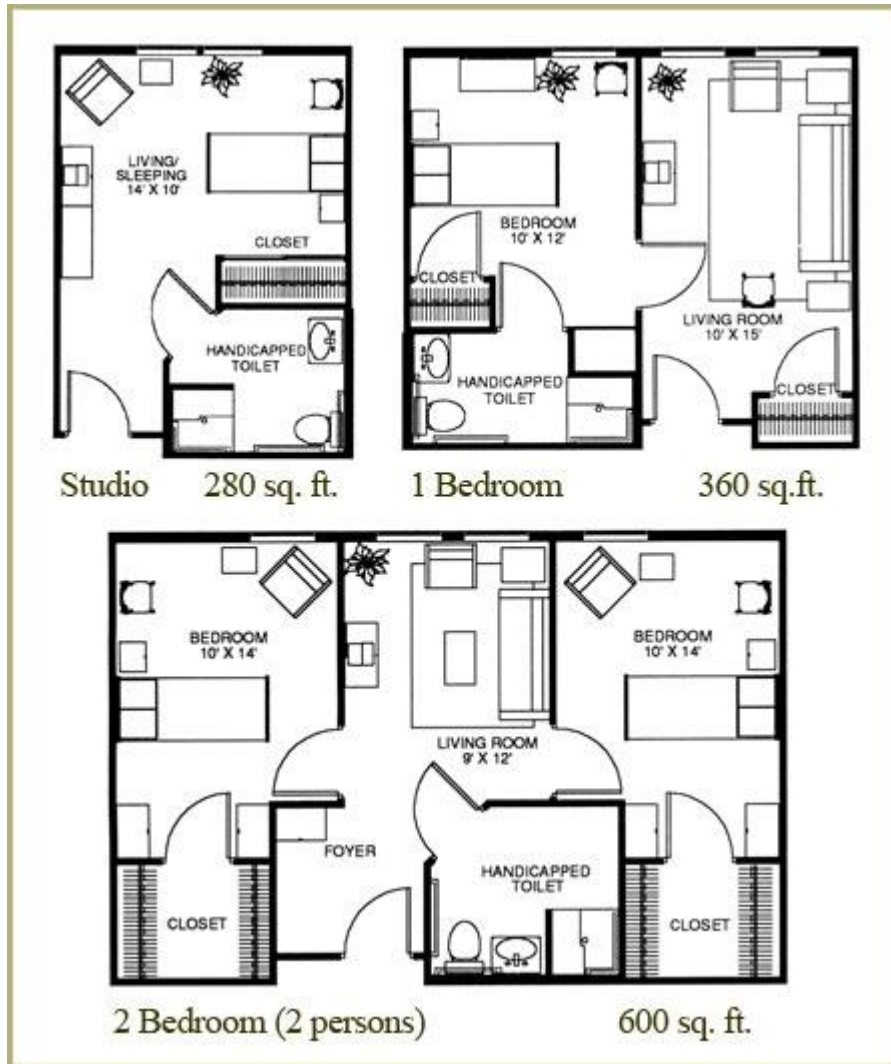
# ORCHARD TERRACE

## Assisted Living Floor Plans



## ***Assisted Living Floor Plans Fiddler's Green***

**Blossom Place** floor plans are studios with private baths.  
**Garden House** floor plans are studios with shared baths.



# EDENTON

Independent • Assisted Living • Dementia Care  
Home Care Services

5800 Genesis Lane  
Frederick, MD 21703  
Phone (301) 694.3100 ~ Fax (301) 694.0308  
[www.edentonfrederick.com](http://www.edentonfrederick.com)