



Independent • Assisted Living • Dementia Care
Home Care Services

Assisted Living Rate Sheet – 2020

1) Accommodation	Floor Plan	Daily	Monthly
Orchard Terrace	Studio	\$ 165	\$ 4950
	1-Bedroom	\$ 174	\$ 5220
	Companion Suite (Shared Bath)	\$ 155	\$ 4650
	Deluxe 1-BR/Couple's Suite	\$ 195	\$ 5850
Fiddler's Green	Studio	\$ 165	\$ 4950
	1 Bedroom	\$ 174	\$ 5220
	2 Bedroom	\$ 190	\$ 5700
	Companion Suite (Shared Bath)	\$ 155	\$ 4650
Above: 2 nd Person in same suite – the cost for the 2 nd person is \$1500/month, plus level of care. ----- Below: Garden House & Blossom Place are specialized Alzheimer's and/or dementia care Assisted Livings.			
Garden House	Studio only	\$ 155	\$ 4650
Blossom Place	Studio only with private bath	\$ 165	\$ 4950

2) Care Levels		Daily	Month
Care Levels*	Level 1	\$ 25	\$ 750
	Level 2	\$ 35	\$ 1050
	Level 3	\$ 45	\$ 1350
* Care levels are determined, in part, by completion of 1) Health Care Practitioner Physical Assessment by the resident's physician; nursing assessment by our Director of Nursing; and 3) State Assisted Living Scoring Tool, all of which consider factors such as mobility, medications, monitoring of clinical needs, safety awareness, fall risk, incontinence, and cognitive and behavioral status.			

Calculating Cost? 1) Accommodation Rate + 2) Care Level = Total Cost

What's included in the Cost?

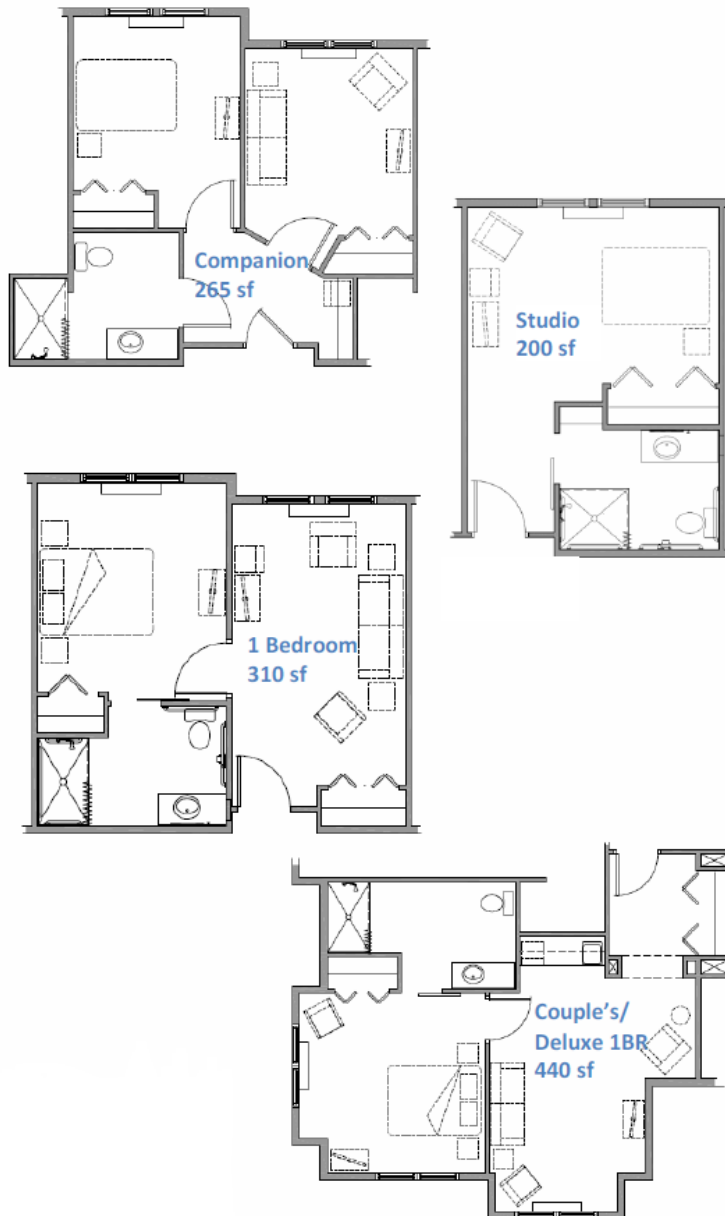
Room, all meals and snacks, housekeeping, personal laundry, linens, towels, activities program, basic cable, wi-fi, and furniture – bed, dresser, nightstand, chair, lamp (or resident can bring his/her own furniture); & personal care such as assistance with bathing, dressing, toileting, mobility, medication administration, individual care plans, monitoring of clinical status and needs.

One-time, non-refundable Community Fee of \$3000 (\$4000/couple)

***30-day respite stays based on availability – Add \$10/day**

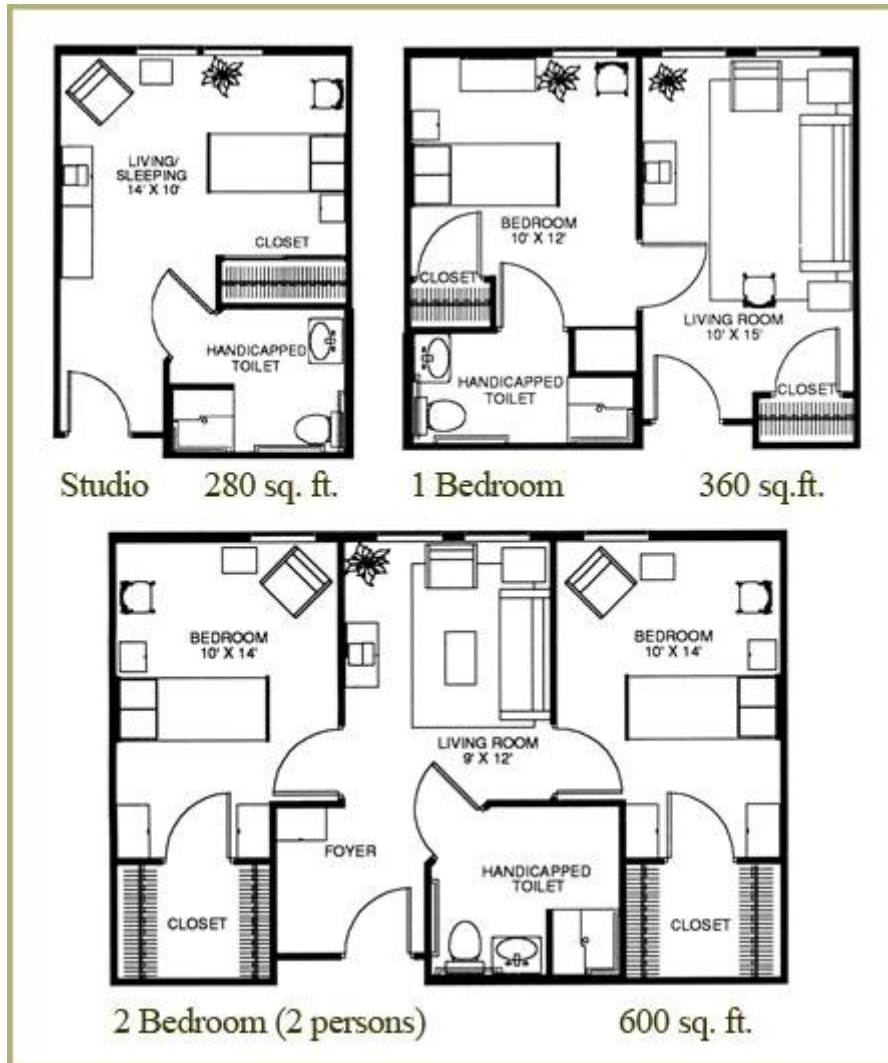
Prices effective as of 1/1/2020 and are subject to change without notice
Costs listed above reflect a 30 day month

Assisted Living Floor Plans



Assisted Living Floor Plans Fiddler's Green

Blossom Place floor plans are studios with private baths.
Garden House floor plans are studios with shared baths.



EDENTON

Independent • Assisted Living • Dementia Care
Home Care Services

5800 Genesis Lane
Frederick, MD 21703

Phone (301) 694.3100 ~ Fax (301) 694.0308

www.edenton-retirement.com